

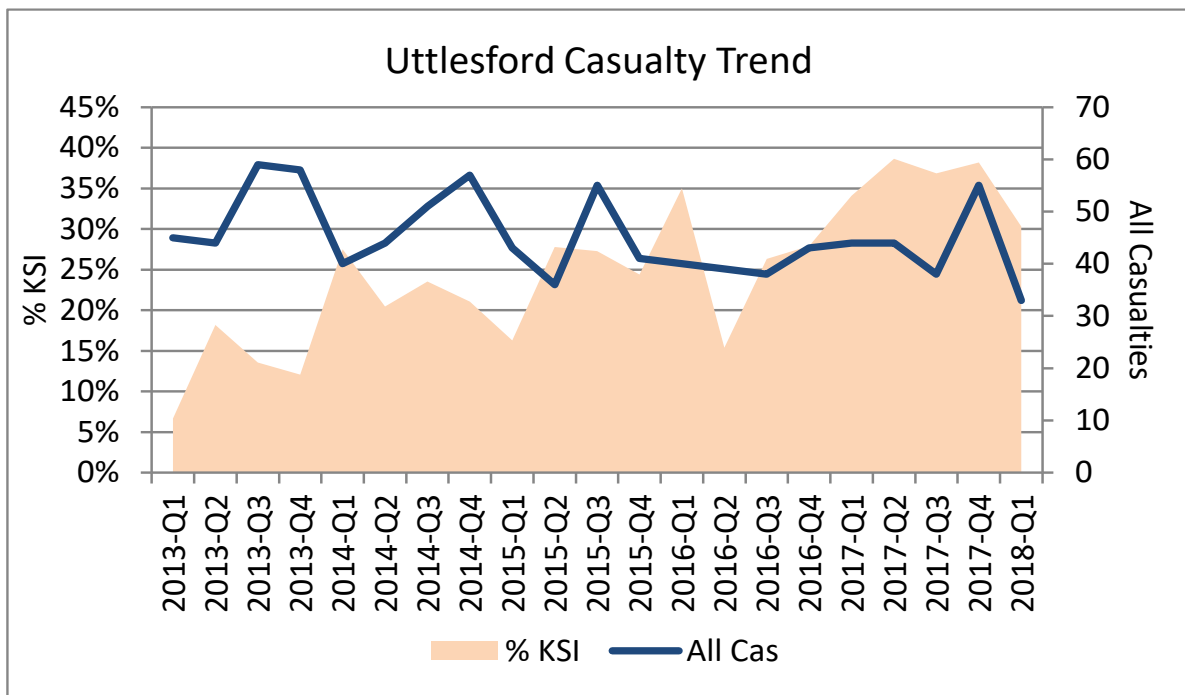
## Uttlesford

### Aim

This document summarises key road safety activity and casualty data for Uttlesford district within the 5 year period from 01<sup>st</sup> January 2013 until 31<sup>st</sup> March 2018.

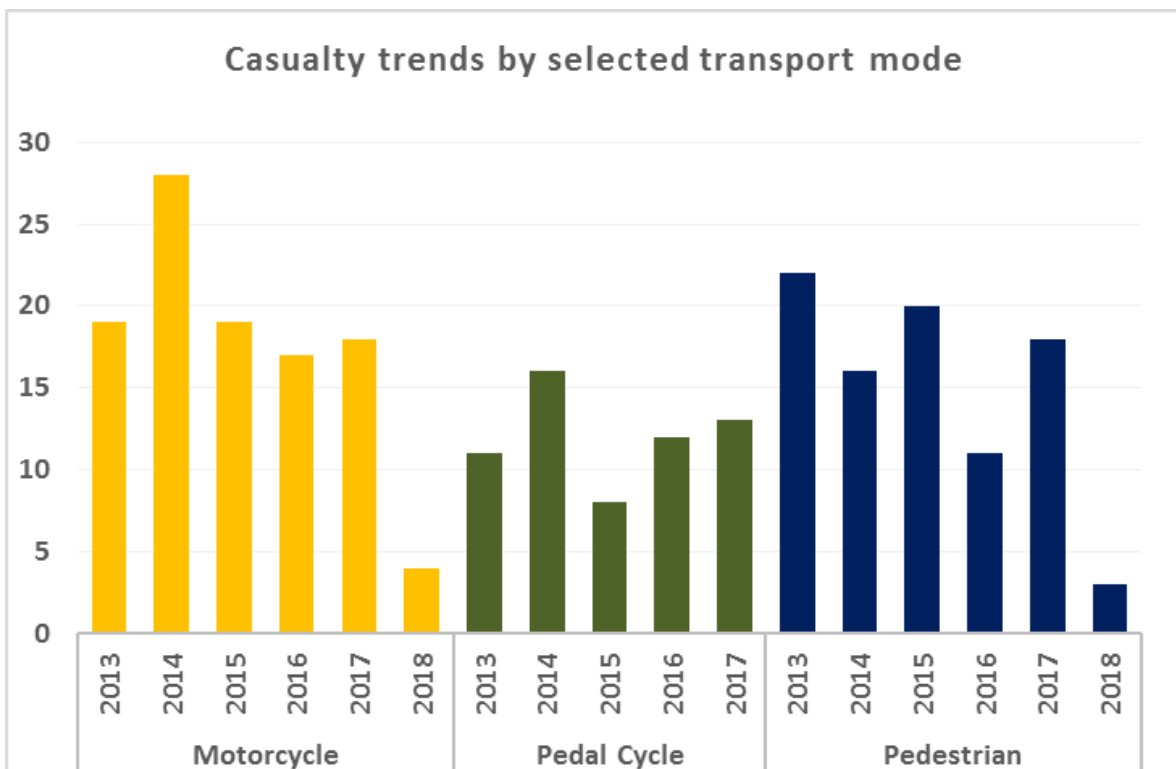
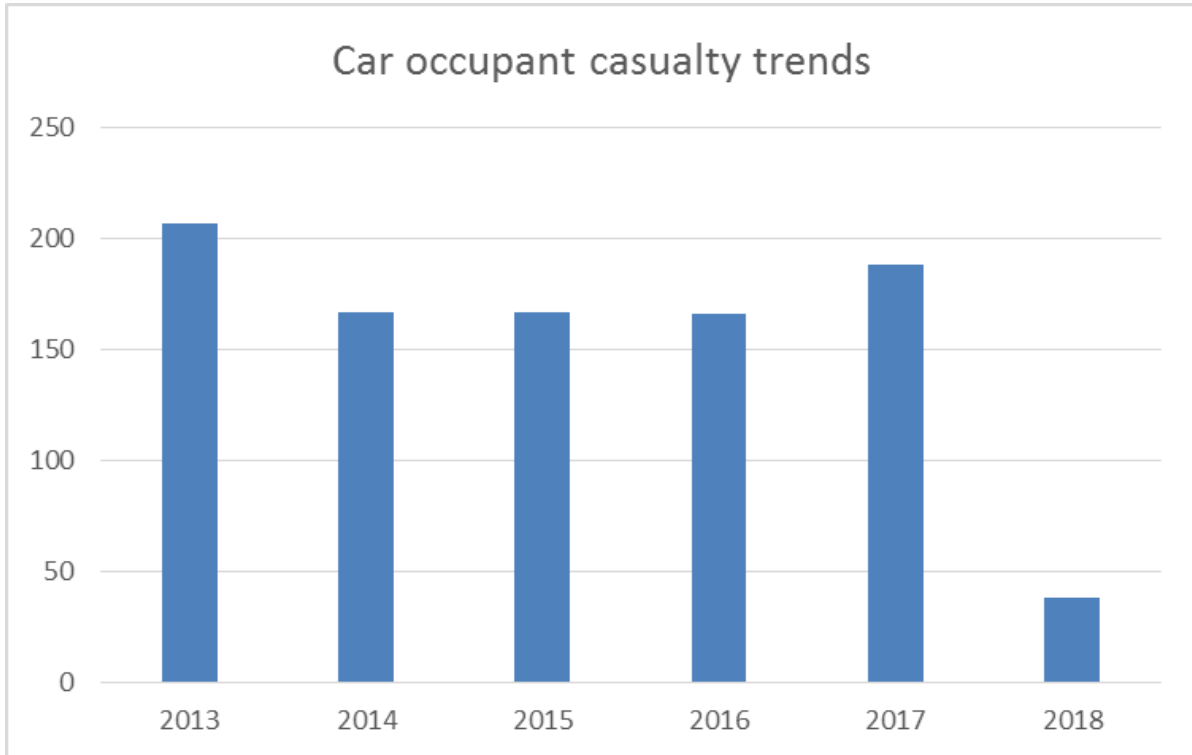
### Collision & Casualty Data

#### **All casualty severities**



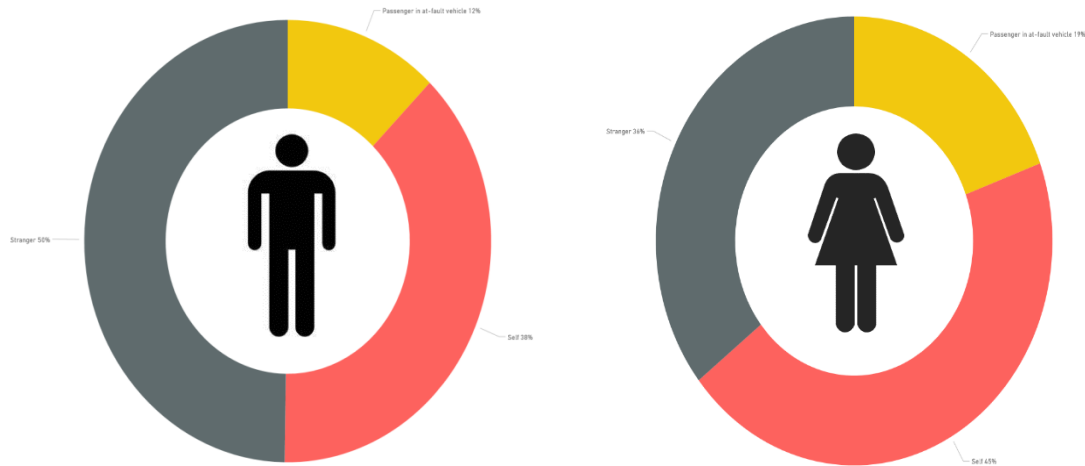
Overall all casualties in Uttlesford are on a downward trend, apart from a spike in the last quarter of 2017. The proportion recorded as killed or seriously injured increased and continued to increase through end of 2016 into 2017. This was due to a new Police recording system which has improved the accuracy of severity classification resulting in in some casualties which would previously have been classed as slight, now being recorded as serious. The fatalities at district level are too small in number for any meaningful trends to be apparent.

The charts below show car occupant casualty numbers in Uttelsford have remained consistent over the years 2014/15/16 with a rise in number in 2017. Other casualty user groups that could be considered vulnerable, have had a rise in 2017 in all modes, particularly pedestrians.



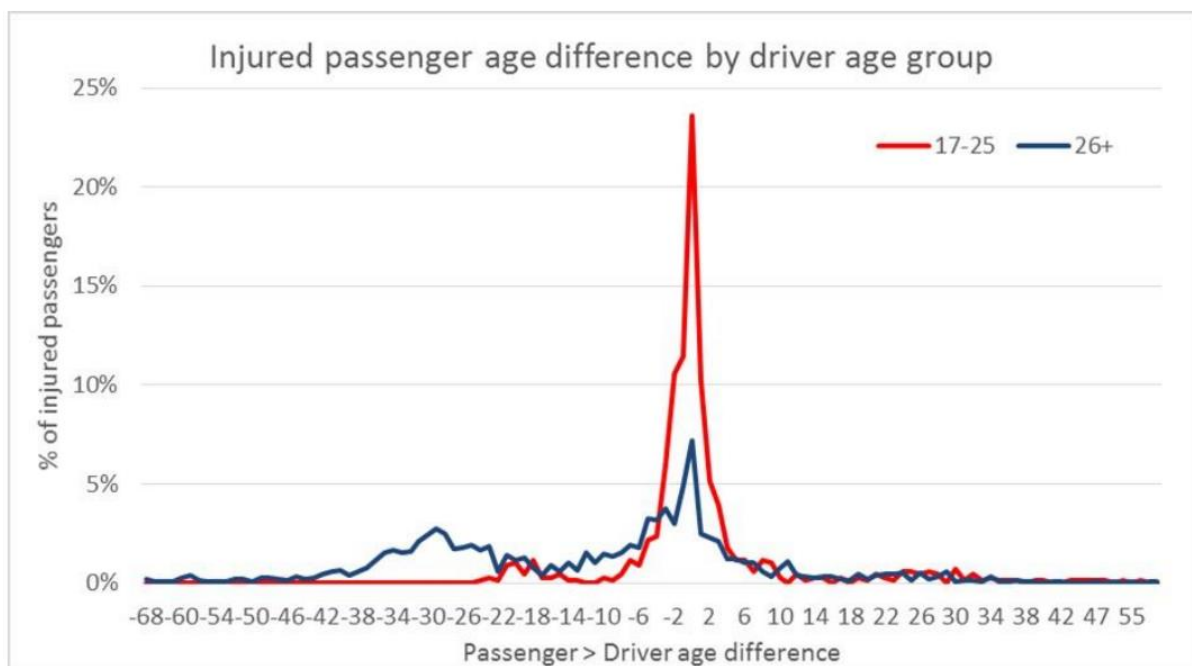
## Young adults

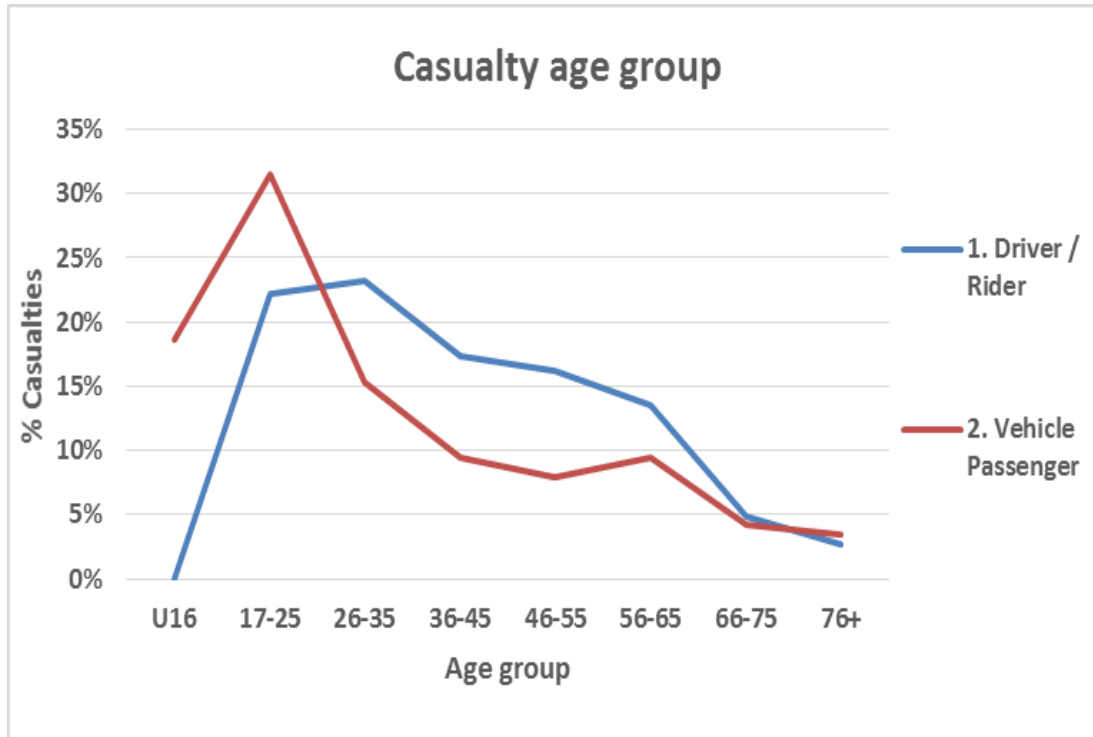
In most cases people aged 16-25 are the highest risk road users, both as contributors to collisions and as casualties. The charts below show the difference in casualty-fault relationship between males and females in this group.



This shows a higher proportion of females than males were injured as passengers of the at-fault driver, however nearly half young females were primarily at fault for the collision involvement in this district. Males on the other hand have a lower proportion of at fault collision and half were attributed by strangers.

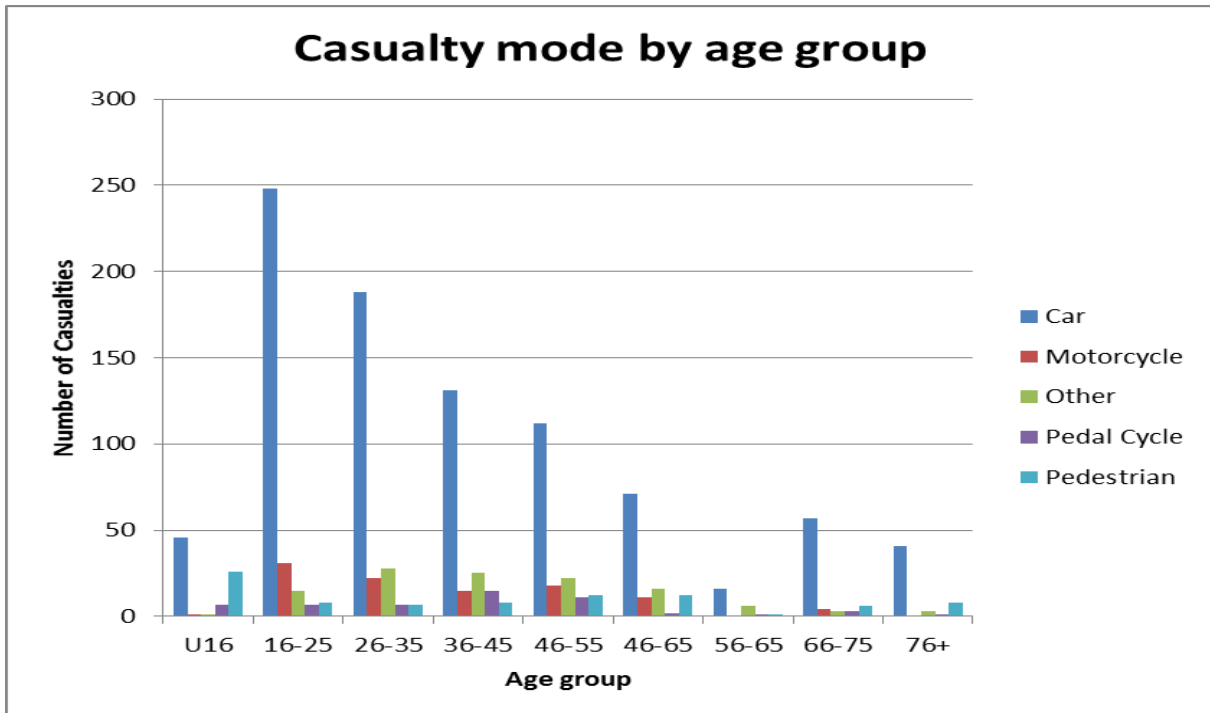
With regard to injured passengers the graph below uses data for all casualties in Essex and indicates that cars driven by 17-25 year olds are more likely to have passengers of the same age, than the 26+ age groups, which indicates that this group is more at risk. However the 26-35 age group drivers are showing similar percentages of casualties as the younger drivers.





### Age groups

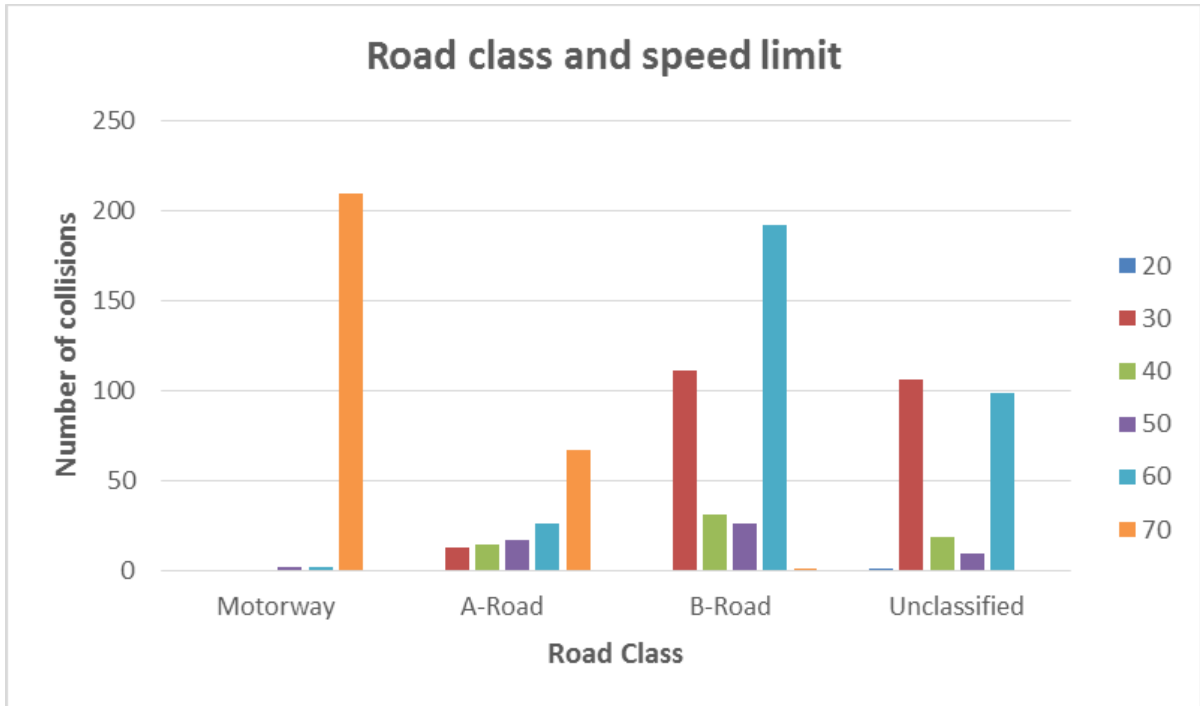
The below graph with the Uttlesford area data shows that the most vulnerable age group are the 16-25 year olds, particularly in cars, motorcycles within this age group are also more at risk. Within the 26-35, 36-45 and 46-55 year olds the number of casualties with other types of vehicle are also at risk, this could be business or work related, ie. Buses or Commercial vehicles.



Casualty age	Casualty Mode				
	Car	Motorcycle	Other	Pedal Cycle	Pedestrian
U16	44	1	1	7	19
16-25	233	31	15	6	8
26-35	176	20	28	7	7
36-45	126	15	24	15	8
46-55	104	18	21	12	11
56-65	84	11	22	4	13
66-75	51	4	3	3	6
76+	40		3	1	7
Unknown	24	2	1	5	2

## Road Type

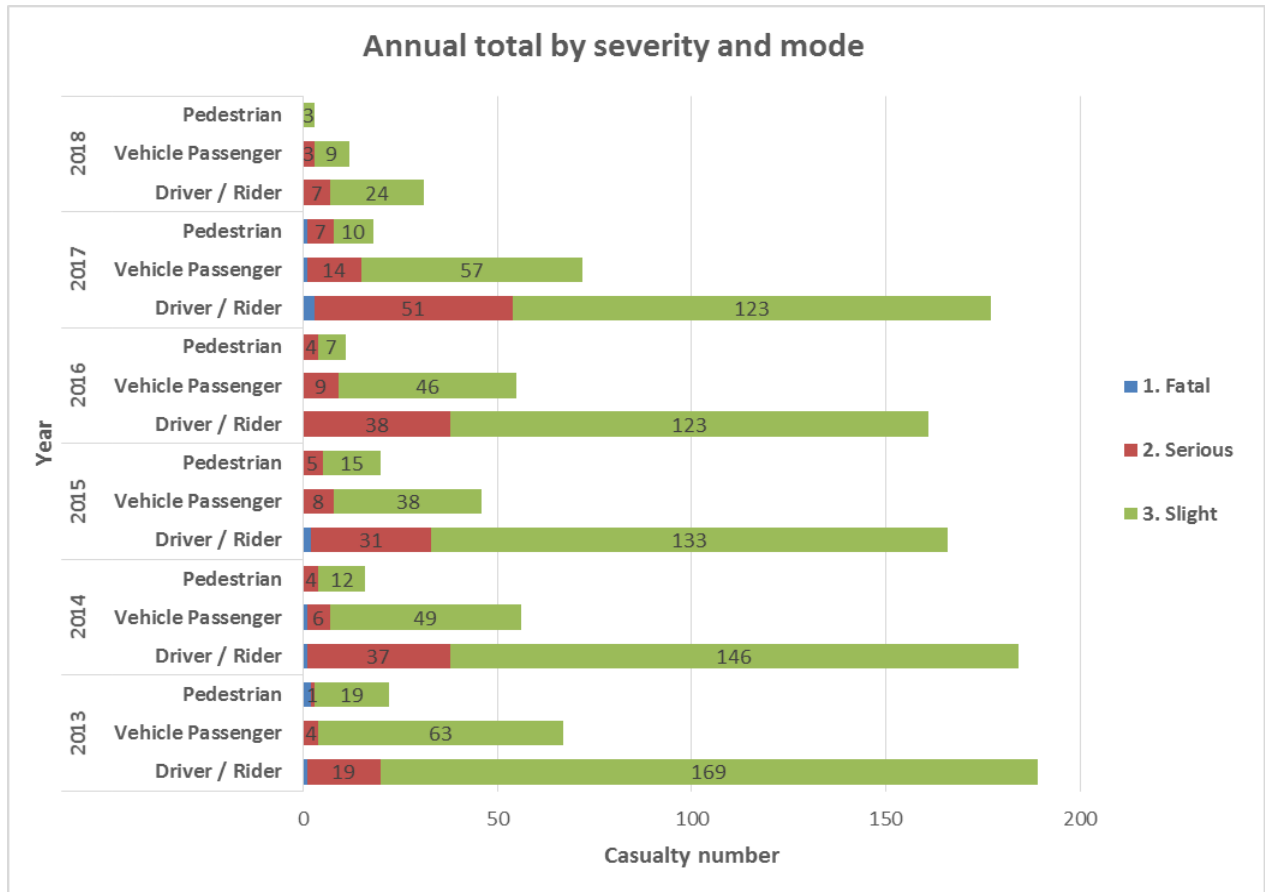
The number of collisions in the Uttlesford area has been sorted into the road class and speed limit, as the table shows the highest number of accidents happen on the motorway with national speed limit. Also showing high figures are the collisions on B roads with both 30 and 60 speed limits.



Speed Limit	Motorway	A-Road	B-Road	Unclassified
20				1
30		13	103	102
40		14	31	19
50	2	16	24	10
60	2	23	180	95
70	201	62	1	

## Annual casualty totals

The data in the graph below shows the total of casualties by year and casualty class. The bars show the split with the number of casualties by severity. In 2013 the number of slight injuries were higher than subsequent years, however the number of serious casualties have risen in all modes in later years. The total number of fatal casualties for the 5 year period was 12.



## LOCAL PROFILE



12 months to April...		2014	2015	2016	2017	2018
Casualty mode	Car	198	175	167	175	167
	Motorcycle	23	26	22	15	16
	Other	23	33	16	17	29
	Pedal Cycle	15	13	8	14	10
	Pedestrian	16	19	19	12	15
Casualty age group	U16	16	11	13	15	17
	16-25	63	66	54	54	56
	26-35	47	48	48	48	47
	36-45	47	32	37	29	43
	46-55	31	44	35	32	24
	56-65	29	30	23	20	32
	66-75	13	16	8	19	11
	76+	14	10	9	13	5
Unknown	15	9	5	3	2	
Casualty severity	Fatal	3	3	1	2	3
	Serious	36	39	57	55	59
	Slight	236	224	174	176	175
All casualties		275	266	232	233	237



# Uttlesford District Map

The map of the district of Uttlesford showing collisions.

